



LASER SOLUTION

CO2-SERIES

DESCRIPTION

Laser markers « CO2-Series » offers unique advantages:

- **High Speed marking:** its galvanometric head produces ultra-fast markings and is easily integrated into any production line.
- **Minimal Operating costs** due to the lack of consumables or maintenance.
- **Permanent engraving** on all organic materials (wood, rubber, leather etc.) and mineral materials (glass, ceramics etc.) as well as clear plastics and coated metals.

 **ON THE FLY Marking**

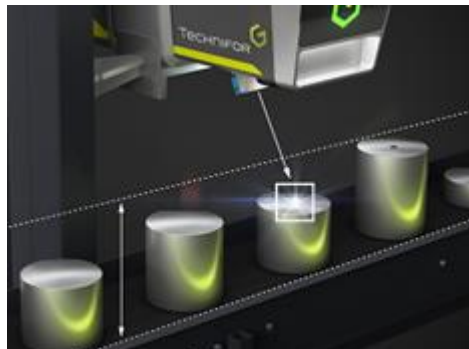
 **Eco-Friendly**

 **Transparent & Organic Materials**

ACCESSORIES & OPTIONS



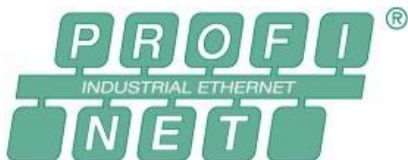
« On-the-fly » kit



AUTO-FOCUS
With motorized Z-Axis



VISION MANAGER



PROFINET
ETHERNET IP



MINI-IN-LINE
Class 1 Nozzle cap protection



- F100 → 70x70mm
- F150 → 100x100mm
- F200 → 140x140mm
- F300 → 210x210mm

FOCAL LENS

CO2 Series: LASER CO2 10600 NM

Technical SPECIFICATIONS		C20	C30
Power		20 W	30 W
Frequency		CW laser (Continuous Wave)	
Operating temperature		15° - 40° C	
Storage temperature		5°C - 45° C	
Humidity level		10 - 85 %	
Rated voltage		100 - 240 V AC 50 /60 Hz	
Rated power consumption		1000W	
MARKING SPECIFICATIONS			
Marking Speed		10 000 mm/s	
Marking Area		F100 (70x70 mm) / F150 (100x100mm) / F200 (140x140mm) / F300 (210x210mm)	
Beam diameter (F100)		300 µm	
Character Type	Font	Fonts optimized for traceability: +60 fonts (customised fonts on request)	
	Barcode	Code 39 / Code 128 / Code 93 / Code 11 / Codabar / 2 of 5 / EAN13 / EAN8	
	2D code	DataMatrix ECC200 / QR code / Micro QR code / UID	
	Logo image	LO3 format using Logo editor Max from any format (BMP, DXF, EPS, IGES, JPEG, PNG, TIFF, etc.)	
interface SPECIFICATIONS			
HMI (Human Machine Interface)		Integrated Backlit screen with control panel for: REAL-TIME SUPERVISION, EASY DIAGNOSIS, SOFTWARE UPDATES, LOG FILES, MEMORY BACK-UP...	
Interfaces		Ethernet; Profinet; 8I / 8O; Dedicated I/O (SUB D37); RS232; USB (x3)	
Supported OS for LaserTrace Software		Windows XP, Windows Vista, Windows 7 & 8	
PHYSICAL SPECIFICATIONS			
Weight		24 kg	
Mounting positions		All directions	
DIMENSIONS (mm)			

